



P.O. Box 360, 14935 U.S. Highway 36, Norton, KS 67654
785-877-3323 or 800-577-3323
www.prairielandelectric.com

PRAIRIE LAND
ELECTRIC COOPERATIVE

NEWS

PRAIRIE LAND ELECTRIC COOPERATIVE, INC.

BOARD OF TRUSTEES

Mike Rogers

President

Keith Ross

Vice President

Sandy Benoit

Secretary

Robert Paxson

Treasurer

Ivan Bohl

Trustee

Ronald Griffith

Trustee

Otto Levin

Trustee

William Peterson

Trustee

Lowell Thoman

Trustee

Scott Urban

Trustee

Eric Witmer

Trustee

STAFF

Kirk Girard

CEO

POWER LINE ISSUES

Call 800-577-3323 to report outages and other power line issues.

POWER
to make life better

Prairie Land Fuels Growth of Student Leaders at Cooperative Youth Leadership Camp

As part of our commitment to the cooperative principle of concern for community, Prairie Land Electric Cooperative sponsors two students each year for Cooperative Youth Leadership Camp (CYLC) — helping young leaders build confidence, gain experience, and bring those skills back to strengthen their hometowns.

MAKENZIE HEIGHT and **EDWARD HORINEK**, representing Prairie Land, recently participated in the 48th Annual CYLC held July 11-17 near scenic Steamboat Springs, Colorado. The camp brought together 77 high school student leaders from Kansas, Oklahoma, Colorado and Wyoming, sponsored by 45 electric and agriculture cooperatives.

Height and Horinek were selected by Prairie Land because of their exemplary leadership skills, academic excellence,



Makenzie Height (left) and Edward Horinek recently represented Prairie Land at Cooperative Youth Leadership Camp.

involvement in extracurricular activities, and strong character as demonstrated in their applications. Similar to the Electric Cooperative Youth Tour, these student leaders were hand-selected through a competitive process that began with an application. Candidates then completed study materials, including a cooperative

Continued on page 12B ►

NOTICE OF RATE MEETING | SEPT. 23, 2025

The Board of Trustees of Prairie Land Electric Cooperative, Inc., will meet on **TUESDAY, SEPT. 23, 2025, AT 1 P.M.** at the cooperative's Norton office located at 14935 U.S. Highway 36.

THE PURPOSE OF THE MEETING WILL BE TO DISCUSS AND VOTE UPON THE PROPOSED TARIFF REVISIONS FOR THE NET METERING AND PARALLEL GENERATION RIDERS FOR THE DISTRIBUTED ENERGY SERVICES RELATED TO RECENT CHANGES IN STATE STATUTE, AS WELL AS UPDATES TO THE RENEWABLE ENERGY PROGRAM RIDER RELATED TO RESIDENTIAL COMMUNITY SOLAR.

This meeting is open to any member who wishes to attend.

Members have the right under K.S.A. 66-104d(g) to request Kansas Corporation Commission review of any rate change. If you have questions, please call Prairie Land at 785-877-3323 or 800-577-3323.

EMPLOYEE ANNIVERSARY

GREGG GLENNEMEIER



Gregg Glennemeier

GREGG GLENNEMEIER began his employment with Prairie Land on Sept. 8, 2000, as an apprentice lineman with the construction crew in Bird City.

In 2003, he transferred to Norton to continue his work on the construction crew. He earned his journeyman lineman certification in 2008. In 2017, Gregg was promoted to crew foreman, and in 2022, he advanced to the role of assistant operations manager.

Gregg and his wife, Ashley, have three children, Tyson, 24; Brynn, 22; and Evelyn, 10. In his spare time, he enjoys woodworking and working on the family farm.

LABOR Day Office Closing

In observance of Labor Day, our office will be closed on **MONDAY, SEPT. 1.**



KNOW WHAT TO DO IN AN EMERGENCY

**YOUR SAFETY MATTERS.
BE PREPARED THIS HARVEST SEASON!**

If your equipment contacts a power line, stay inside the cab and call 911. Only exit if there is immediate danger like a fire. If you must exit, jump clear without touching any part of the equipment, and hop away keeping feet together.

Prairie Land Fuels Growth of Student Leaders at Cooperative Youth Leadership Camp

Continued from page 12A ►



Leadership, laughter and late-night campfire chats — CYLC isn't just a trip, it's an experience.

knowledge test and an essay on the meaning of leadership, before advancing to interviews.

Throughout the weeklong camp, students gained hands-on experience in cooperative business operations by forming and managing a mock candy cooperative. They elected a board of directors, appointed a general manager, created committees, and held daily membership meetings, mirroring the real-world structure of member-owned cooperatives. Educational sessions covered leadership development, conflict resolution, and co-op career opportunities. Highlights included electric safety demonstrations by cooperative linemen, a live raptor presentation from HawkQuest, and a tour of the Craig Power Station.

"The things that have most affected me were all of the amazing presentations," said Height. "From birds to leadership, all have taught me things that I never would have known without CYLC."



Home from CYLC and full of inspiration! Our delegates brought back new friendships, leadership skills, and big ideas for the future.

CYLC offered more than just professional growth opportunities; it fostered a sense of camaraderie and adventure. Students explored the natural beauty of Mount Werner, experienced the charm of downtown Steamboat Springs, and braved the rapids of the Colorado River on a rafting trip. Recreational highlights included a volleyball tournament, swimming, a talent show and a dance.

"I would say the leadership talks every morning have affected me most," said Horinek. "I have learned a lot from those and am looking forward to applying them into my everyday life. Super helpful in the leadership role!"

For more information on how to attend camp or other youth trip opportunities, contact Steph Peltier at speltier@ple.coop.

Farm Safety for Kids

Farms and ranches give kids unique opportunities to gain responsibility, independence and strong work ethics. Growing up on a farm helps children develop problem-solving skills, build close family bonds, gain respect for the food cycle, and cultivate a deep passion for the land.

However, agriculture is also one of the most dangerous industries for youth in the U.S. More young people die working in agriculture than in all other industries combined, with a child lost to an agriculture-related incident approximately every three days. Many of these tragedies occur when kids take on tasks that aren't suited to their age or abilities.

The impact of a farm injury or fatality extends beyond the individual, affecting families and entire communities. The emotional and mental toll can last a lifetime, underscoring the importance of prioritizing safety for everyone.

By implementing safety strategies, farmers, ranchers, families and employees can reap the benefits of farm and ranch life while minimizing risks.

WHY ARE KIDS AT GREATER RISK?

Injuries often occur when children are doing something beyond their mental, physical or emotional abilities. They are susceptible to certain types of accidents and injuries:

- ▶ Children often work on farms at young ages and in hazardous jobs.
- ▶ Their bodies and brains are still developing, affecting coordination, decision-making and impulse control.
- ▶ Kids tire easily, are more likely to get distracted (think cellphones and social media) and may take risks to prove themselves.
- ▶ Many lack experience and may be reluctant to ask questions or admit uncertainty.

GRAIN BIN DANGERS

Grain bins are especially hazardous. Grain can act like quicksand, trapping and suffocating anyone who enters. Most youth grain entrapments are fatal. Kids should never enter grain bins or “walk down” grain, and all grain storage areas should be off-limits and secured.

In 2010, in Mt. Carroll, Illinois, four young farm workers, aged 14-20, were sent to loosen clumped grain from inside a grain bin. Three of the youth became entrapped in the grain. Two were engulfed and suffocated, and the third was rescued following a six-hour mission. A settlement of \$16 million was awarded to the affected families. This case led to the formation of the Grain Handling Safety Council, www.GrainSafety.org.

5 ESSENTIAL FARM SAFETY TIPS FOR KIDS

- 1 KEEP KIDS OFF TRACTORS.** Tractors are involved in more than 40% of fatal farm accidents involving children



under 15. Most kids are not tall or strong enough to operate them safely. Only let youth operate one if they meet safety guidelines for age, size and maturity.

- 2 SUPERVISE AND RESTRICT ACCESS.** Young children should never be in work areas unsupervised. Fence off or lock hazardous areas like grain bins, animal pens and equipment storage.
- 3 ASSIGN AGE-APPROPRIATE TASKS.** Match chores to the child's abilities and maturity. Teens are more likely to take risks, so clear guidelines and supervision are essential.
- 4 CREATE A SAFE ENVIRONMENT.** Remove hazards such as slippery or uneven surfaces, keep equipment keys out of reach and avoid repetitive motion. Provide protective gear like gloves, non-slip shoes and hearing protection.
- 5 TRAIN AND MODEL SAFE BEHAVIOR.** Teach kids how to perform tasks safely, practice together until they become proficient, and consistently demonstrate safe habits yourself. Kids learn by watching adults.

FARM SAFETY STARTS WITH OPEN COMMUNICATION

Discuss farm safety regularly with your kids. Clearly explain which areas are off-limits, how to spot hazards, and why following rules is essential. Frequent, open conversations help build safe habits and encourage kids to think before they act.

Conduct safety audits of your farm, ranch and home together. Identifying and fixing hazards not only protects your children but also helps them learn how to prevent injuries.

Supervision is key. Always keep a close eye on children, especially in areas with potential dangers. Remember, learning safe habits takes time and patience — be prepared to repeat instructions to encourage smart, lasting and safe work habits.

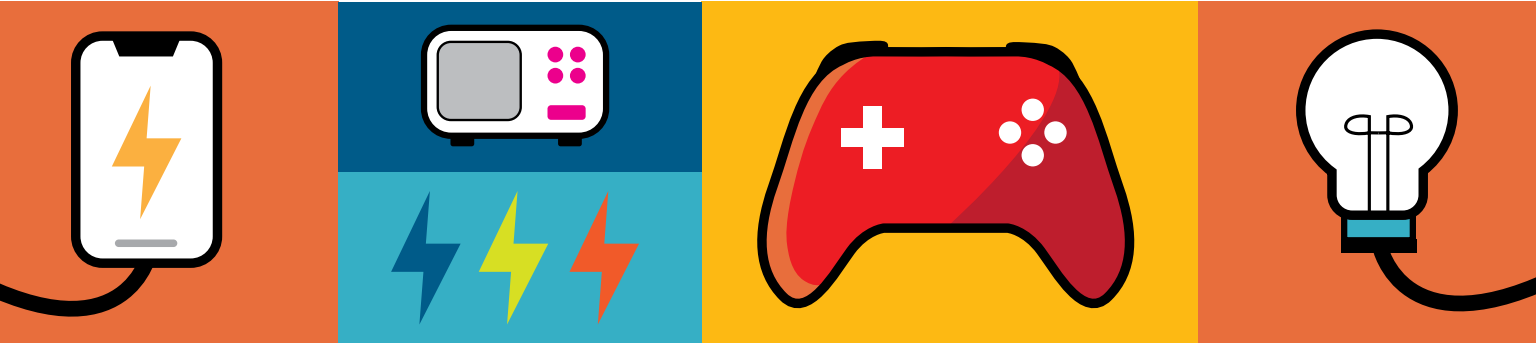
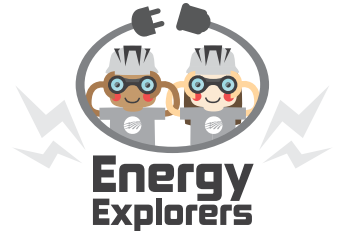
For more tips on assigning safe farm tasks to kids, check out the Agricultural Youth Work Guidelines at www.CultivateSafety.org/AYWG.

Farming is more than a job; it's a way of life. By making safety a family priority, we can help ensure that future generations enjoy the rewards of farm life with fewer risks.

The Value of Electricity

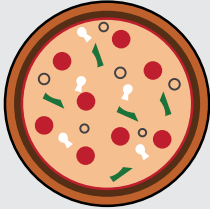
Did you know the average daily cost of electricity is about \$5? When you think about all the ways we use electricity every day, that's a great value!

A DAY'S WORTH OF ELECTRICITY POWERS: HOME HEATING/COOLING, ELECTRONICS, LIGHTING, MAJOR APPLIANCES AND MORE.



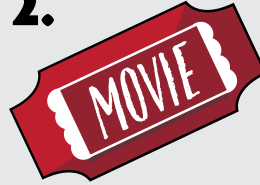
Look at the everyday items below, then add a plus (+) sign next to the items you think cost more than daily electricity. For items you think cost less than daily electricity, add a minus (−) sign.

1.



Large Pizza

2.



1 Movie Ticket

3.



Candy Bar

4.



Video Game

5.



Ice Cream Cone

6.



Plush Toy

ANSWER KEY 1. + 2. + 3. - 4. + 5. - 6. +