



P.O. Box 360, 14935 U.S. Highway 36, Norton, KS 67654  
785-877-3323 or 800-577-3323  
www.prairielandelectric.com

PRAIRIE LAND  
ELECTRIC COOPERATIVE

# NEWS

## PRAIRIE LAND ELECTRIC COOPERATIVE, INC.

### BOARD OF TRUSTEES

**Mike Rogers**  
President

**Keith Ross**  
Vice President

**Sandy Benoit**  
Secretary

**Robert Paxson**  
Treasurer

**Ivan Bohl**  
Trustee

**Ronald Griffith**  
Trustee

**Otto Levin**  
Trustee

**William Peterson**  
Trustee

**Lowell Thoman**  
Trustee

**Scott Urban**  
Trustee

**Eric Witmer**  
Trustee

### STAFF

**Kirk Girard**  
CEO

## FROM THE CEO

# New EPA Power Plant Rules Threaten Grid Reliability

On April 25, the Environmental Protection Agency (EPA) released four major new regulations for the electric industry, including a much-anticipated rule to cut emissions from power plants, a sweeping move that will aggravate reliability concerns for electric cooperatives and other utilities nationwide.

“The path outlined by the EPA is unlawful, unrealistic and unachievable,” said Jim Matheson, CEO of the National Rural Electric Cooperative Association. “It undermines electric reliability and poses grave consequences for an already stressed electric grid.”

The power plant rule constrains existing coal and new natural gas plants by requiring them to install carbon capture and storage (CCS) technology that is not yet reliable or commercially available.

“The new EPA rules ignore our nation’s ongoing electric reliability challenges and are the wrong approach

at a critical time for our nation’s energy future,” Matheson said.

The power plant rule will force the early closure of electricity generation sources that are available 24/7 and will also impede the construction of new natural gas plants. The timing of these sweeping new rules is particularly troubling as electric utilities face a surge in demand for electricity from factors like transportation electrification and the rapid expansion of data centers to support artificial intelligence, e-commerce and cryptocurrency.

Under the new rule, existing coal-fired power plants that plan to operate



**Kirk Girard**

*Continued on page 12C ▶*

## POWER LINE ISSUES

Call 800-577-3323 to report outages and other power line issues.



Our offices will be closed on Thursday, July 4, 2024, to observe

**Independence Day.**

Please call 1.800.577.3323 if you have an outage.

**PRAIRIE LAND'S TOP FOUR GENERATOR SAFETY TIPS**



**Never connect a generator directly to your home's wiring unless your home has been wired for generator use.** This can cause backfeeding along power lines and electrocute anyone coming in contact with them, including lineworkers making repairs. Have a licensed electrician install the equipment necessary to safely connect emergency generators to your home.

**Always plug appliances directly into generators.** Connecting the generator to your home's circuits or wiring must be done by a qualified, licensed electrician who will install a transfer switch to prevent backfeeding.

**Use heavy-duty, outdoor-rated extension cords.** Make sure extension cords are free of cuts or tears and the plug has three prongs. Overloaded cords can cause fires or equipment damage.

**Never overload a generator.** A portable generator should only be used when necessary to power essential equipment or appliances.

**Mendenhall Completes 25 Years of Service**

**EVERETT MENDENHALL** began his employment on July 9, 1999, as a meter reader in the Concordia area.

He became a Prairie Land employee with the Aquila, Inc. acquisition in 2007.

In 2012, Mendenhall advanced to assistant warehouseman and in 2019, he was promoted to warehouseman.

Mendenhall was born and raised in Concordia, but he has also lived in Arizona and Southern California. He served four years in the Air Force and is a Vietnam veteran.

Everett and his wife, Donna, live in Concordia. In his spare time, he enjoys making salsa, four-wheeling, being with family and vacationing.



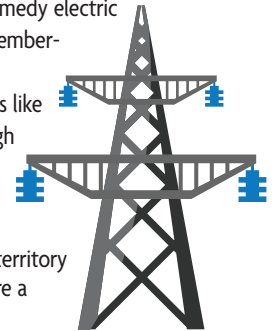
**Everett Mendenhall**  
25 Years

**FERC DECISION LOWERS COSTS FOR WESTERN KANSAS**

The mission of Sunflower Electric Power Corporation, Prairie Land Electric's power supplier, is to provide reliable energy at the lowest possible cost, so we are pleased with the recent decision by the Federal Energy Regulatory Commission (FERC) to remedy electric transmission infrastructure costs that were unfair to Sunflower's member-utilities, including Prairie Land.

Electric utilities, and ultimately the consumers, in wind-rich areas like western Kansas have been paying 67% of construction costs for high voltage transmission infrastructure to transmit 70% of the energy unaffiliated with Sunflower's load to other areas of the nation.

FERC's recent order assigned 100% of the cost for Sunflower's four projects that primarily benefit electric consumers outside its territory to the wider region. **WE ADVOCATE FOR YOU** ... because you're a co-op member and that makes all the difference.

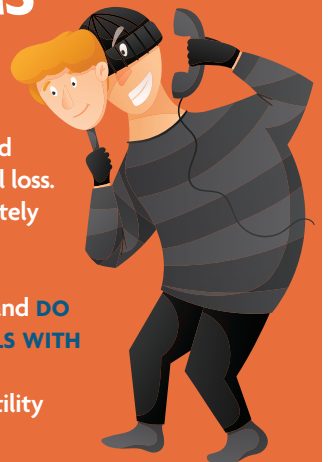


**AVOID UTILITY SCAMS**

We have been informed about an increase in scam calls targeting our members. Following scammers' instructions may compromise your bank or credit card information, potentially leading to significant financial loss.

If you receive a suspicious call, hang up immediately and report the call to us by dialing 1-800-577-3323, even if it is outside of normal business hours. To safeguard your financial information, stay vigilant and **DO NOT SHARE YOUR PERSONAL OR FINANCIAL DETAILS WITH UNVERIFIED CALLERS.**

You can also check out more tips on common utility company scams to watch for on our website at [www.prairielandelectric.com/avoiding-utility-scams](http://www.prairielandelectric.com/avoiding-utility-scams).



# New EPA Power Plant Rules Threaten Grid Reliability

Continued from page 12A ▶

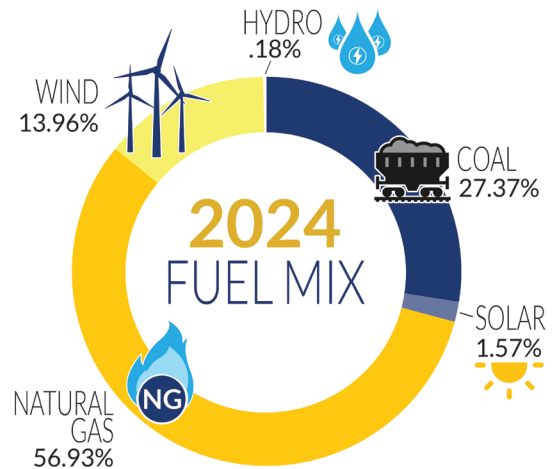
past the start of 2039 must install CCS to capture 90% of emissions by 2032.

The rule also requires new natural gas plants that operate more than 40% of the time to install CCS and capture 90% of their carbon emissions by 2032. These standards, and their reliance on unproven CCS technology, will undermine electric reliability.

Sunflower Electric Power Corporation, Prairie Land's generation and transmission provider, utilizes a balanced approach to power supply for its members by maintaining a diverse generation portfolio, as illustrated

in the graphic on the right. To ensure reliability and affordability, Sunflower relies on baseload generation from coal and natural gas while also incorporating renewable resources like solar and wind to complement the energy mix.

Electric cooperatives understand the need to keep the lights on at a cost local families and businesses can afford. Clean energy technologies must be balanced with generation sources that are always available to ensure a reliable electric grid.



Electric cooperatives like Prairie Land deliver power to 42 million Americans. Our top priority is to meet our members' energy needs, and we must have reliable electricity available to do that.

## Meet Prairie Land's Summer Interns



Trace Billinger



Layne DeMoss



Trey Melton



Bentley Montgomery



Timothy Rziha

Prairie Land is pleased to introduce our lineworker interns that joined us in mid-May.

**TRACE BILLINGER** is a native of Smith Center and is interning with the Norton line crew. He is completing the lineworker program at Manhattan Area Technical College. His hobbies include hunting, fishing, riding dirt bikes and camping.

**LAYNE DEMOSS** of Hoisington is a student at Pratt Line School in Dodge City. He is completing his internship with the Phillipburg line crew. Layne enjoys attending ranch rodeos and spending time with friends.

**TREY MELTON**, a student at Manhattan Area

Technical College, will be fulfilling his internship with our Concordia line crew. Originally from Belleville, Trey enjoys spending his free time hunting and fishing.

**BENTLEY MONTGOMERY** is a Smith Center native and currently enrolled at Manhattan Area Technical College. He is completing his internship with the Smith Center line crew. In his free time, Bentley enjoys hunting, golfing and watching sports.

**TIMOTHY RZIHA** of Atchison is a student at Pratt Line School in Pratt. He will be completing his internship with the Saint Francis line crews. Timothy enjoys running, fishing, hunting and water skiing in his free time.

Background Image: A view of the Northern Lights near Prairie View during the geomagnetic solar event on May 16.

# NATIONAL GRILLING MONTH WORD SEARCH

July is National Grilling Month! Can you find all the words associated with grilling in the puzzle below? Use the word bank as a guide.



B H C D F T N U Z R B J R Q G  
 O A U F O N H R K Q S H E F V  
 M A R N X U J O R W Z N M B L  
 W M G B F B X L F P O K M V Z  
 X S J A E Z K M O R F S U B T  
 E S R P N Q I V P H P R S H V  
 X C D L L F U A L A C B K P J  
 V K J N A E B E T M E V K V X  
 J X O Y E K D U T B C H N I J  
 W N P T B I L C P U T Y T Y F  
 N C C N J A R O C R C G C D A  
 Y T W V C Z A F W G M E W B M  
 O D G R I L L A R E O U X W I  
 U L T K U S Q N V R S Q U B L  
 L E T K S O Q R G O D T O H Y

## WORD BANK

- Hamburger
- Spatula
- Hot Dog
- Friends
- Summer
- Apron
- Grill
- Barbeque
- Family
- Tongs



Cooking outdoors is a fun way to spend time with friends and family! By cooking outside, you can save energy indoors and keep your home cooler.