



P.O. Box 360, 14935 U.S. Highway 36, Norton, KS 67654  
785-877-3323 or 800-577-3323  
www.prairielandelectric.com

PRAIRIE LAND  
ELECTRIC COOPERATIVE

# NEWS

## PRAIRIE LAND ELECTRIC COOPERATIVE, INC.

### BOARD OF TRUSTEES

**Ronald Griffith**  
President

**Mike Rogers**  
Vice President

**Sandy Benoit**  
Secretary

**Robert Paxson**  
Treasurer

**Ivan Bohl**  
Trustee

**Otto Levin**  
Trustee

**William Peterson**  
Trustee

**Keith Ross**  
Trustee

**Lowell Thoman**  
Trustee

**Scott Urban**  
Trustee

**Eric Witmer**  
Trustee

### STAFF

**Kirk Girard**  
CEO

### POWER LINE ISSUES

Call 800-577-3323 to report outages and other power line issues.



## FROM THE CEO

# 2023 Project Update Excerpt from the 2023 Annual Report

2023 saw the start and finish of two large substation projects and the beginning of a third

We broke ground at the beginning of the year on the expansion of our existing Phillipsburg 115 kilovolt (kV) substation. This expansion was needed in order to serve the enlargement of the Summit Sustainable Ingredients plant, which we called the Amber Wave project. This project also required us to make significant upgrades in our Phillipsburg ethanol plant substation.

One of the biggest hurdles we had to overcome during this project was the long lead times on materials due to supply chain issues. Our crews worked hand-in-hand with crews from Sunflower Electric Power Corporation, our generation and transmission provider, to complete the project approximate-

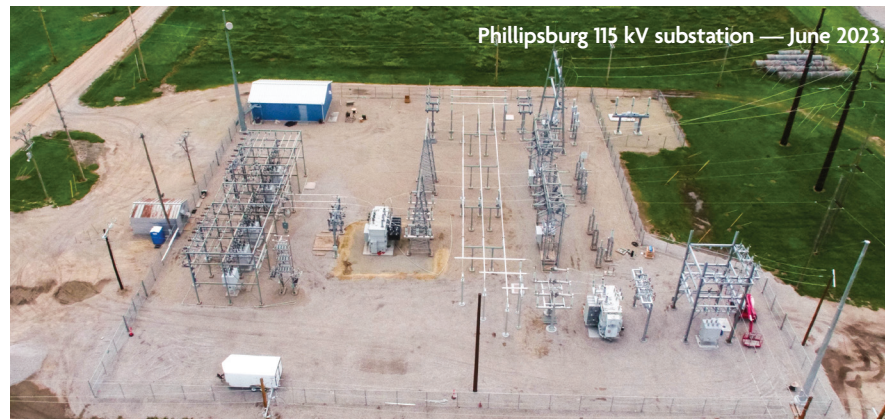
ly one and a half months before the scheduled energization.

Another large substation project that was started in 2023 was the expansion and upgrade of our Smith Center 115 kV substation. Most of our distribution equipment was at its end of life and we were having problems acquiring parts to keep the existing equipment functional. In October 2023, we started this expansion project which entailed enlarging the substation footprint, installing new distribution feeder equipment and building a new control house. Work progressed exceptionally well through-



Kirk Girard

*Continued on page 12D ▶*



# 2023 Financial Report Excerpt from the 2023 Annual Report

## BALANCE SHEET

### ASSETS

Total Utility Plant	214,360,210
Less Depreciation	(83,631,926)
<b>Net Value of System</b>	<b>130,728,284</b>
Cash and Temporary Investments	1,812,002
Investments in Assoc. Organizations	51,284,015
Receivables	6,592,011
Materials & Supplies	2,567,869
Pre-payments	359,148
Other Current Assets	920,645
Deferred Debits	3,416,068
<b>Total Assets</b>	<b>197,680,042</b>

### LIABILITIES

Long Term Debt	89,347,420
Deposits	763,379
Notes and Accounts Payable	7,232,686
Current Liabilities	6,855,418
Deferred Credits	480,832
Equities and Margins	93,000,307
<b>Total Liabilities</b>	<b>197,680,042</b>

## INCOME STATEMENT

### INCOME

Electric Revenue	62,875,838
------------------	------------

### EXPENSES

Power Cost	34,314,698
Operations	12,203,557
Depreciation	7,066,849
Taxes	2,152,314
Interest	4,235,239
Miscellaneous	193,353
<b>Total Expenses</b>	<b>60,166,010</b>

### OPERATING MARGIN

2,709,828

### NON-OPERATING MARGIN

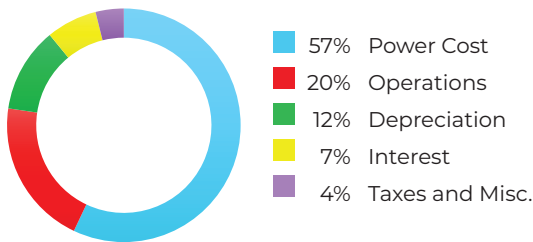
2,404,751

### TOTAL MARGINS FOR 2023

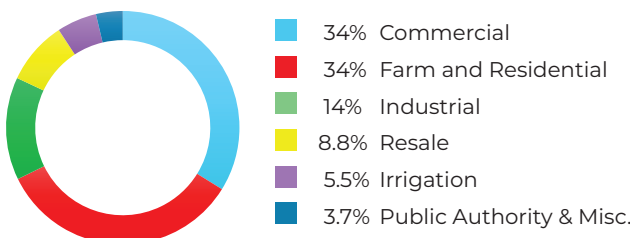
**5,114,579**



## OPERATING EXPENSES



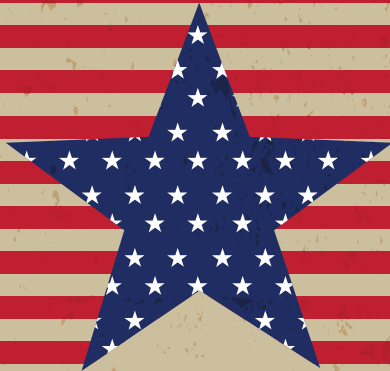
## ELECTRIC SALES REVENUE



## 2023

No. of Prairie Land Members.....	13,797
No. of Connected Meters .....	24,630
Miles of Line .....	6,997
Meters per Mile of Line .....	3.5
Investment per Mile of Line .....	\$30,636
Investment per Meter .....	\$8,703
Kilowatt Hours Purchased .....	617,661,664
Kilowatt Hours Sold .....	584,338,472
Kilowatt Hour Losses .....	33,323,192
Line Loss % .....	5.40%
Long-Term Debt .....	\$89,347,420
Plant Additions .....	\$15,363,500
Plant Retirements .....	\$3,016,758
No. of New Services Added .....	133
No. of Services Retired.....	109
No. of Full-time Employees .....	87
Capital Credits Retired in 2023 .....	\$287,004
Capital Credits Retired All Years .....	\$17,748,802

# We Will Not Forget...



## MEMORIAL DAY



*Our offices will be closed on Monday, May 27, 2024, in observance of the Memorial Day holiday.*

*Please call 800-577-3323 to report an outage.*

## Prairie Land Congratulates Employees for Years of Service

**KIRK GIRARD** began his career May 23, 1994, as an accountant with Norton-Decatur.

On June 1, 2002, Girard was promoted to office manager for Prairie Land. In 2005, he advanced to director of finance, and in 2013 Girard was promoted to director of finance and administration. In January 2019, Girard was promoted to assistant CEO, and in 2021 he advanced to CEO.

“Over the past 30 years, I have seen tremendous change at Prairie Land,” Girard said. “We have merged with a neighboring cooperative, built a new office, acquired an investor-owned utility (which tripled our membership) and have seen huge changes in technology. I have been truly blessed to be a part of such a great company.”

Girard and his wife, Tammy, have two grown children and one grandson. In his spare time, he enjoys watching sports, camping, traveling, riding side-by-sides, and spending time with family.



Kirk Girard

**BRANDON BLUE** began his employment May 15, 2009, as an apprentice lineman in Smith Center.

In 2012, he advanced to journeyman lineman, and in 2017 he was promoted to foreman for Smith Center. He is currently Smith Center’s area supervisor.

“Prairie Land has been a good place to work,” Blue said. “I have enjoyed my time.”

Brandon and his wife, Saige, have two children, Ayden, 9, and Bowen, 9 months. In his spare time, he enjoys hunting and fishing.



Brandon Blue

## STEER CLEAR OF OVERHEAD AND UNDERGROUND POWER LINES

- ▶ Look up and look out for overhead power lines.
- ▶ Keep a 20-foot minimum clearance between you or an object you are holding and a power line.

### BE MINDFUL OF POWER LINES WHEN COMPLETING THESE TASKS:

- ▶ **HOME MAINTENANCE** Cleaning gutters, being on the roof or using extended tools to wash windows or skim a pool.
- ▶ **TRANSPORTING TALL OBJECTS** Ladders are not the only extended objects people use outdoors. Be careful anytime you are moving a tall object or tool.
- ▶ **REMEMBER**, power lines can be buried too. Call 811 or visit [www.call811.com](http://www.call811.com) before digging to get underground public utilities marked.
- ▶ **YARD WORK** Trimming trees, carrying ladders and digging.
- ▶ **CONTRACTED AND DIY PROJECTS** If you are planning any project that requires digging, ensure underground utilities are marked.

Look up and out for overhead power lines. **CONTACT CAN HAPPEN IN AN INSTANT.** If there is a damaged/downed power line or pad-mounted transformer (green box), do not go within 50 feet.

SOURCE: [WWW.SAFEELECTRICITY.ORG](http://WWW.SAFEELECTRICITY.ORG)



## PRAIRIE LAND WELCOMES NEW EMPLOYEES

### WILLIAM “BJ” DEIMLER

began his career with Prairie Land as safety coordinator on March 18, 2024. He was a journeyman lineworker in Mapleton, Utah, and is relocating to Norton.

BJ grew up in Lehi, Utah, and graduated from Lehi High School. He completed his power line training through the Intermountain Power Superintendents’ Association (IPSA) and is currently working toward a business degree through Western Governors University.

BJ and his wife, Sabrina, have three children: 11-year-old Liam, 9-year-old Abel and 5-year-old Emry. In his spare time, he likes to hunt and fish or spend time with his family, especially to travel and attend concerts.



BJ Deimler

### BROCK MEANS

returned to the Prairie Land family as a journeyman lineworker in Phillipsburg on April 1, 2024. He completed his internship with Prairie Land back in 2017.

Brock graduated from Phillipsburg High School and completed line school in Manhattan. He is returning to Phillipsburg after working for Eergy in Atchison.

Brock and his wife, Meghan, are expecting their first son at the end of June. He spends his free time house hunting, but once they find their home, he can resume hunting, fishing and spending time with family.



Brock Means

## 2023 Project Update Continued from page 12A

out the end of the year and completion was expected in March 2024.

As many of our members are aware, we started a major meter exchange project for residential and small commercial services in November 2023. The current meters that were installed in 2012 were starting to fail at a high rate as they were nearing the end of their expected useful life. They will be replaced with the same kind used for other non-residential services, allowing us to streamline our process and continue to provide the best service we can to our members. These meters report energy consumption, which is used for billing, and voltage levels and current, which are used to help us operate the system in a more efficient manner. This project is scheduled to be completed in the first quarter of 2025.

We have also seen an influx in the number of road and bridge projects

that require us to temporarily or permanently move our distribution infrastructure. One in particular was on Highway 383 between Alma and Highway 36. This was just the first stage of this highway project, and we are expecting two more stages that will require us to relocate our lines. Bridge projects are a little simpler as they are usually just temporary moves. One of these projects was just south of Washington on Highway 15 and another west of Logan on Highway 9.

As technologies advance, we are always looking for opportunities to improve how our system reacts to significant changes, such as severe weather events, inadvertent human interaction or other changes that are outside of our control. Innovative technologies can provide capabilities to operate our system more efficiently, reliably and safely.

### DON'T PLUG THESE 15 THINGS INTO A POWER STRIP



#### IN THE KITCHEN

- ✗ Refrigerators
- ✗ Microwave ovens
- ✗ Toasters
- ✗ Coffee makers
- ✗ Blenders
- ✗ Slow cookers
- ✗ Rice cookers

#### IN THE LAUNDRY ROOM

- ✗ Washing machines
- ✗ Dryers

#### IN THE BATHROOM

- ✗ Hair dryers
- ✗ Curling irons
- ✗ Other hairstyling tools

#### THROUGHOUT THE HOUSE

- ✗ Sump pumps
- ✗ Space heaters
- ✗ Portable air conditioners



**Do not overload power strips by plugging in appliances that consume more watts than the cord can handle. This can cause the power strip to overheat or start a fire.**

SOURCE: WWW.SAFELECTRICITY.ORG