



P.O. Box 360, 14935 U.S. Highway 36, Norton, KS 67654  
785-877-3323 or 800-577-3323  
www.prairielandelectric.com

PRAIRIE LAND  
ELECTRIC COOPERATIVE

# NEWS

## PRAIRIE LAND ELECTRIC COOPERATIVE, INC.

### BOARD OF TRUSTEES

**Mike Rogers**  
President

**Keith Ross**  
Vice President

**Sandy Benoit**  
Secretary

**Robert Paxson**  
Treasurer

**Ivan Bohl**  
Trustee

**Ronald Griffith**  
Trustee

**Otto Levin**  
Trustee

**William Peterson**  
Trustee

**Lowell Thoman**  
Trustee

**Scott Urban**  
Trustee

**Eric Witmer**  
Trustee

### STAFF

**Kirk Girard**  
CEO

## FROM THE CEO

# EPA's Power Plant Rule Threatens Electric Reliability

Being a member-owned cooperative, keeping the lights on at a cost you can afford is the focal point of everything we do at Prairie Land Electric. Integrity is one of our core values, so in addition to sharing co-op successes, I believe we also have a responsibility to tell you about the challenges too.

In May, the U.S. Environmental Protection Agency (EPA) issued a rule that impacts energy production from power plants. The power plant rule will undoubtedly threaten access to reliable electricity for our local community and communities across the country.

The rule constrains existing coal and new natural gas plants by requiring them to install carbon capture and storage (CCS) — a technology that has potential but has not been proven to be viable as required. No power plant in North America currently uses CCS at the scale and levels mandated by

EPA. When power plants aren't able to comply with EPA's CCS requirements, they will be required to shut down, significantly limit operations, or switch fuels. These unrealistic standards will force the unnecessary and early shutdown of many power plants that currently provide reliable electricity 24/7.

Prairie Land is a member-owner of Sunflower Electric Power Corporation, our generation and transmission provider. Sunflower uses a balanced approach to power supply for its members by maintaining a diverse generation portfolio to ensure reliability and affordability, Sunflower relies on baseload generation from coal and natural gas while also incorporating renewable resources like solar and wind to complement the energy mix.




Kirk Girard

*Continued on page 12D ►*

## POWER LINE ISSUES

Call 800-577-3323 to report outages and other power line issues.

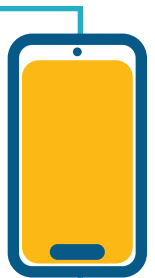



**HAPPY LABOR DAY**  
Honoring the American Worker

Our offices will be closed on Monday, Sept. 2, 2024, to observe Labor Day. Please call 800-577-3323 if you have an outage.

## UPDATE YOUR CONTACTS

Prairie Land's new pay by phone number is 855-939-3638.



# 5 TIPS FOR A SAFE HARVEST

Electrical safety during harvest season requires vigilance and proactive measures. Follow these tips to reduce the risk of electrical accidents.

- 1** Maintain at least a 20-foot distance from power lines when operating equipment like grain augers, elevators and other tall machinery.
- 2** Use a spotter to navigate safely around power lines and other electrical equipment.
- 3** Ensure all farm workers are trained on electrical safety procedures.
- 4** Regularly inspect all electrical equipment and machinery for signs of wear and damage.
- 5** Keep first-aid kits and emergency contact numbers in an easily accessible location.

## Lawrence Completes 20 Years of Service

**KARLA LAWRENCE** began her employment on Sept. 30, 2004, as a meter reader in the Concordia area. She became a Prairie Land employee with the Aquila, Inc. acquisition in April 2007.

In 2013, Karla began working in member support. She serves as a backup to the Concordia office staff, sprays our properties for weeds and does the mowing around the substations. She also makes monthly substation reports that include a reading of all the counters and a visual inspection of the equipment and facilities.

“The best part of my job is the variety,” Karla said. “Every day I’m doing something different.”

Karla and her husband, Willie, have four adult children and four grandchildren. In her spare time, she loves to go for walks with her dog and spend time with her grandkids. Congratulations, Karla, on 20 years.



Karla Lawrence  
20 Years

## Prairie Land Welcomes Montgomery

**BENTLEY MONTGOMERY** started his internship in Smith Center in May, and joined us as a full-time apprentice lineworker on July 15.

Montgomery is a Smith Center native and went to line school at Manhattan Area Technical College. In his free time, he enjoys hunting, golfing and watching sports.



Bentley  
Montgomery

## LYDIC RETIRES



**DEB LYDIC** (center) retired on July 10 after more than 10 years of service. Her family and friends gathered to congratulate her including her husband, Greg, (left) and daughter, Adriana (right).

## KIDS CAFE



Prairie Land employees volunteered at the Norton Kids Cafe on July 29 as a part of their commitment to the communities we serve. **BACK ROW FROM LEFT:** CIS Manager Julie Douglas, Safety Coordinator B.J. Deimler, CEO Kirk Girard. **FRONT ROW FROM LEFT:** Senior Billing Clerk Lynette Jones, Accounting Clerk Kendra Daniels, Director of Administration April Karnopp and Administration Specialist Monica Kats.



# Coles and Reeves Attend Cooperative Youth Leadership Camp

**QUINN COLES** of Clyde and **BREANNA REEVES** of Scandia represented Prairie Land Electric Cooperative, Inc., during the 47th Annual Cooperative Youth Leadership Camp (CYLC) July



Quinn Coles, Clyde



Breanna Reeves, Scandia

12-18, 2024. Located near Steamboat Springs, Colorado, this event brings together 79 student leaders from Kansas, Oklahoma, Colorado and Wyoming, sponsored by 44 participating electric and agricultural cooperatives.

“At Prairie Land, we are invested in empowering young leaders,” said Krik Girard, Prairie Land CEO. “That’s why we’re excited to continue supporting the Cooperative Youth Leadership Camp. It’s our way of giving students the chance to step up and make a real impact in our community.”

Throughout the camp, students learned about the cooperative organizational structure and operation by forming a candy cooperative. Campers collaborated with their peers, elected a board of student directors, appointed a general manager, formed committees and engaged in daily membership meetings. In addition to these experiences, participants

attended seminars covering leadership, conflict management and cooperative career pathways. The agenda also featured sessions on electric safety and avian protection by HawkQuest, and a tour of the Craig Power Station.

CYLC also embraced the spirit of camaraderie and adventure to enhance teamwork among the students. They ventured to Mount Werner and downtown Steamboat Springs. Recreational activities included swimming, a volleyball tournament, a talent show and a dance. They even went white water rafting on the Colorado River.

For Reeves and Coles, the experience made them feel more at ease with meeting people.

“I was out of my comfort zone,” Reeves said. “The ambassadors inspired me to see the good in everyone. I became friends with people I probably wouldn’t cross paths with at school!”

“I was inspired by the energy at camp,” added Coles. “Everyone was so welcoming.”

Prairie Land sponsors the trip for two students each year. For more information on how to attend or send students to camp, contact Director of Member Services Elena Larson.



Colorado River rafting is always a favorite activity among the youth.



## WHICH FOODS ARE IN YOUR EMERGENCY KIT?

### THE FOOD IN YOUR EMERGENCY KIT SHOULD:

- ▶ Have a long storage life.
- ▶ Require little or no cooking, water or refrigeration.
- ▶ Include nourishment for infants and toddlers, if applicable.
- ▶ Meet special dietary needs.
- ▶ Include the needs of pets if you have them.

### WATER AND PREP SUPPLIES SHOULD INCLUDE:

- ▶ One gallon of water per person per day to last at least three days.
- ▶ A manual can opener and cooking supplies.
- ▶ Indoor warming methods, such as chafing dishes and fondue pots.

### SEVERAL DAYS’ WORTH OF FOOD FOR EACH PERSON COULD INCLUDE:

- ▶ Canned meats, fruits and vegetables.
- ▶ Grains, such as crackers and multigrain cereals.
- ▶ Protein or fruit bars.
- ▶ Dried fruit.
- ▶ Peanut butter.
- ▶ Canned soups, meats and beans.
- ▶ Powdered milk.
- ▶ Dried meat/jerky.
- ▶ Oatmeal or breakfast bars.

### BE PREPARED TO KEEP THOSE YOU LOVE SAFE, NOURISHED AND HYDRATED DURING AN EMERGENCY.



SOURCE: FEMA, CDC, WWW.SAFEELECTRICITY.COM

## EPA's Power Plant Rule Threatens Electric Reliability Continued from page 12A ▶

While renewable sources, such as solar and wind, are important components of our overall generation mix, given the intermittent nature of these energy sources, we simply cannot depend on them because the wind doesn't always blow and the sun doesn't always shine. The need for always-available power generating resources is still essential.

The timing of the power plant rule is equally troubling. At the same time the EPA is leading our nation down the path to fewer power plants, utilities are facing a surge in electricity demand — driven by the onshoring of manufacturing, the growth of the American economy and the rapid expansion of data centers to support artificial intelligence, e-commerce and cryptocurrency.

Many states have already experienced rolling outages, and if the supply of electricity is further threatened by the EPA's power plant rule, the problem will only get worse. In fact, the North American Electric Reliability Corporation (NERC), the nation's electric reliability watchdog, recently forecasted that over the next five years, all or parts of 19 states are at high risk of rolling power outages during normal peak electricity demand conditions.

It's also no secret that when demand

is high and supply is low, costs go up. We're concerned about threats to reliability as well as cost increases to our members.

I don't say all of this to worry you, but I do want our members to understand the challenges that lie ahead. Just as we've always done, we will look for solutions that serve our members best. We are joining electric co-ops across the country and our statewide trade organization, Kansas Electric Cooperatives, Inc., to fight these regulations, and we are working with our local elected officials and statewide policymakers to help them understand the consequences this would have on all Kansans.

Co-ops are no strangers to innovation, and we're taking proactive steps to address today's energy challenges and tomorrow's energy needs. We've led the charge on industry endeavors such as community solar projects, and we'll continue to explore new technologies and strategies that bolster reliability and our local grid.


Electric cooperatives like Prairie Land deliver power to 42 million Americans to make life better. At the end of the day, our top priority is to meet our members' energy needs, and we must have reliable electricity available to do that.

**WE MUST CONTINUE PROVIDING**

STABLE &  
RELIABLE

Electricity


The EPA announced final rules aimed at existing coal and new natural gas power plants. These rules jeopardize reliable power in Kansas and across the country.



**KEC**  
KANSAS ELECTRIC  
COOPERATIVES, INC.  
A Touchstone Energy® Cooperative

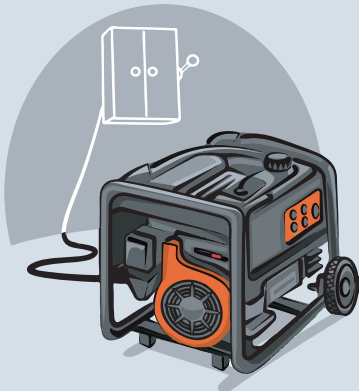
**COOPERATIVELY  
WORKING TO  
PROTECT YOUR  
ENERGY FUTURE**

**FIND  
OUT  
MORE**



If you're interested in learning more about policy impacts to power reliability, or to make your voice heard on this matter, visit [www.voicesforcooperativepower.com](http://www.voicesforcooperativepower.com).

## What is a **TRANSFER SWITCH?**



### **TRANSFER, THROW OR DOUBLE-THROW SWITCH:**

*An essential mechanism that safely shuts off power to the electrical grid before backup power is used. It is sometimes referred to as a double-throw switch, as it controls two separate circuits.*

This switch's job is to safely transfer power from its primary source to a backup power source, enabling users to maintain power during an outage. It works by connecting a generator to your home's main circuits to provide backup power.

Properly installed transfer switches are essential because they prevent dangerous backfeed into the power grid, which endangers utility workers and others. Never plug a portable generator into a wall outlet, as this can cause backfeed.

SOURCE: [WWW.SAFEELECTRICITY.COM](http://WWW.SAFEELECTRICITY.COM)