



P.O. Box 360, 14935 U.S. Highway 36, Norton, KS 67654
785-877-3323 or 800-577-3323
www.prairielandelectric.com

PRAIRIE LAND ELECTRIC COOPERATIVE

NEWS

Prairie Land Electric Cooperative, Inc

Board of Trustees

Ronald Griffith President

Mike Rogers Vice President

Sandy Benoit Secretary

Robert Paxson Treasurer

Ivan Bohl Trustee

Otto Levin Trustee

William Peterson Trustee

Keith Ross Trustee

Lowell Thoman Trustee

Scott Urban Trustee

Eric Witmer Trustee

Staff

Kirk Girard
Chief Executive Officer

Power Line Issues

Call 800-577-3323 to report
outages and other power
line issues.

POWER
to make life better

Serving up Savings

The holiday season is just around the corner and soon, festive music will flood the airwaves, sparkling lights and decorations will adorn homes and businesses, and good tidings will abound.

The holidays also bring a frenzy of decorating, cooking and family gatherings, and amid the hectic hustle and bustle, you may receive higher-than-usual energy bills.

Keeping this in mind, I thought this month would be a good time to remind Prairie Land Electric members of a few habits and efficiency tips to help lower your monthly energy use.

Be Festive Without Breaking the Bank

Each year, often as soon as we finish the Thanksgiving turkey, we begin preparing and placing our favorite Christmas decorations. With holiday

lights adorning our home for well over a month, we switched to LEDs to save energy.

LED holiday lights use 88% less energy than incandescent holiday lights. To put that into perspective, the Department of Energy estimates that with standard holiday decorations, LED lights typically increase energy bills by about \$5 to \$7. But with incandescent lights, energy bills will typically increase by \$33 or more. For homes that go above and beyond with incandescent holiday lighting (think Clark Griswold), energy bills could increase by as much as \$350. Beyond energy savings, LEDs provide additional benefits, such as being shock-resistant, shatterproof and cool to the touch,



Kirk Girard

Continued on page 12B ►

Our offices will be closed Nov. 10, 23 and 24, in observance of the holidays. Please call 800-577-3323 to report an outage.



Attention High School Juniors



Applications for the 2024 **ELECTRIC COOPERATIVE YOUTH TOUR** and **COOPERATIVE YOUTH LEADERSHIP CAMP** are now available. See your high school counselor or contact **KENZIE GRIFFITHS** at

kgriffiths@ple.coop or 785-877-3323 to apply or for more information.

Attention SmartHub Users

Your SmartHub app and web portal are getting a new look, designed to simplify and streamline navigation.

WE THINK YOU'LL LIKE IT.



Serving up Savings

Continued from page 12A ►

With a little planning up front, you can find efficient ways to save on everything from holiday décor to your favorite soup recipes.

making them safer for the home.

You can also lower energy use by conveniently managing holiday lighting. Smart light timers can help you save energy by connecting to a smartphone app or voice assistant to program lights to turn on and off at set times. If you don't use smart home technology, you can still save energy by using traditional timers.

Additional easy ways to save during the holiday season include turning off overhead lights and using your Christmas tree to illuminate your home. If you have a fireplace, remember to close the flue when you're not burning a fire to ensure heat doesn't escape through the chimney.

Keeping the Electric Grid and Your Data Secure

If you plan to have family and friends over this holiday season, cook up energy savings by using small countertop appliances like microwaves, air fryers and slow cookers when possible, as they use much less energy than the stovetop or oven.

When using the oven, bake multiple dishes at once for maximum efficiency. After all, it takes as much energy to cook one dish as it does to cook several. Turn the oven off a few minutes before the recipe's end time and allow the residual heat to finish baking the dish. Once the food is done, leave the stove door ajar to allow the residual heat to warm the room. When using the stove top, match the pan size to the burner to maximize the stove top's efficiency.

I hope a few of these tips will be helpful as we approach the holiday season. Remember, we're here to answer any questions you have about managing energy use or your monthly bills. With a little planning up front, you can find efficient ways to save on everything from holiday décor to your favorite soup recipes.

From your friends at Prairie Land Electric, we hope you have a wonderful holiday season.

DON'T LET POWER LINES Fade into the Landscape

3 Types of Overhead Lines



TRANSMISSION



DISTRIBUTION



SERVICE DROP

Regardless of the type or voltage, any power line can kill if the path of the electrical current is disrupted.



Always look up and look out for power lines when working outdoors.



Be careful any time you go up, whether it be on a ladder, scissor lift or in a cherry picker.

Look for Power Lines When:



Operating a crane, concrete or pump truck.



Raising a truck bed.



Using any long tool or equipment that extends.

SOURCE: WWW.SAFEELECTRICITY.COM

Rose Completes 15 Years of Service

DAVID ROSE started his career with Prairie Land Electric Cooperative on Nov. 17, 2008, as an apprentice lineworker. In 2013, he advanced to journeyman lineworker, the position he currently holds in St. Francis.

David and his wife, Abby, have five children: Dawson, age 17; Dailey, age 14; Emma, age 9; Easton, age 7; and Emmett, age 4.

In his spare time, he enjoys hunting and spending time with family.



David Rose
15 Years

2024 Trustee Election Process

The bylaws of the cooperative provide that the following positions will be elected in the 2024 trustee election:

► **DISTRICT 2** – Decatur, Norton and Phillips counties.

ERIC WITMER of Phillipsburg currently holds this position.

► **DISTRICT 3** – Graham, Rooks and Sheridan counties.

ROBERT PAXSON of Penokee currently holds this position.

► **DISTRICT 4** – Jewell, Mitchell, Osborne and Smith counties.

OTTO LEVIN of Kensington currently holds this position.

► **DISTRICT 5** – Clay, Cloud, Republic and Washington counties.

WILLIAM PETERSON of Clifton currently holds this position.

A nominating committee has been appointed to meet and nominate candidates for these positions. If you are interested in being nominated for one of the positions, contact a member of the committee to discuss your nomination.

The committee will meet at **1 P.M. ON TUE., DEC. 12, 2023** at the Prairie Land Electric office at 14935 U.S. Highway 36 in Norton.

Nominating Committee Members Include:

► **ROGER ZWEYGARDT** – St. Francis
785-332-8253

► **STEPHEN WASHBURN** – Norton
785-202-0338

► **RODNEY BELLEAU** – Hill City
785-421-8149

► **DENNIS HANSEN** – Smith Center
785-282-3211

► **JERRY STENBERG** – Clyde
785-243-0129

Nominations may also be made by petition. Interested candidates should contact the Norton office to request the appropriate form.

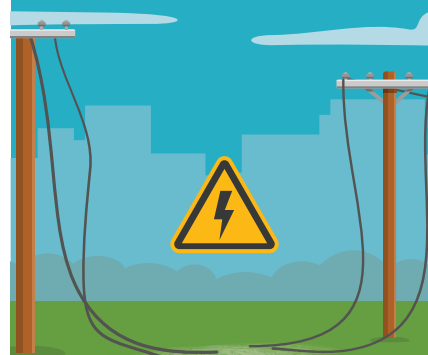
The petition must be signed by no less than 25 members of the district for whom the trustee is to be elected. Petitions need to be delivered to the Norton office by **5 P.M. ON WED., JAN. 10, 2024**. All nominations shall be posted in the Norton office.

The election shall be conducted on an “at large” basis; therefore every member of Prairie Land Electric Cooperative is eligible to vote for all positions in the election. Upon completion of the nominating process, voting materials will be mailed to Prairie Land members **BY THU., JAN. 25, 2024**. The bylaws, as amended, require the use of mail ballots for trustee elections.

Ballots and a postage-paid return envelope will be furnished for the member to use. **BALLOTS MUST BE RETURNED TO THE NORTON OFFICE BY 5 P.M. ON MON., FEB. 12, 2024**. An election and credentials committee will count the ballots by Feb. 20, 2024 and the election results will then be announced to members.

If you have questions regarding this year’s election, please call the Prairie Land office in Norton at 785-877-3323 or 800-577-3323.

Around Damaged POWER LINES



ENERGY CAN SPREAD LIKE RIPPLES ON A POND



Storms and car accidents can damage energized power lines, poles and pad-mounted transformers (green boxes). The damage can cause energy to spread like ripples on a pond, causing two deadly scenarios:

STEP POTENTIAL — When a person walks from one voltage “ripple” to another and their feet experience a difference in voltage.

TOUCH POTENTIAL — When someone touches something at one voltage and steps on or contacts something else at a different voltage.

HELP THE LINEWORKER RESTORE POWER

Occasionally, severe weather can cause power disruptions. When outages occur, our lineworkers get to work! They restore power as quickly and safely as possible.

Help the lineworker reach the transformer to fix the power outage.

